



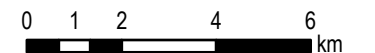
# OFFICIAL PLAN SCHEDULE A1 LAND USE DESIGNATIONS

LEEDS AND THE THOUSAND ISLANDS  
COUNCIL ADOPTION SEPTEMBER 10, 2018

UNITED COUNTIES OF LEEDS AND GRENVILLE  
APPROVAL NOVEMBER 22, 2018

### Legend

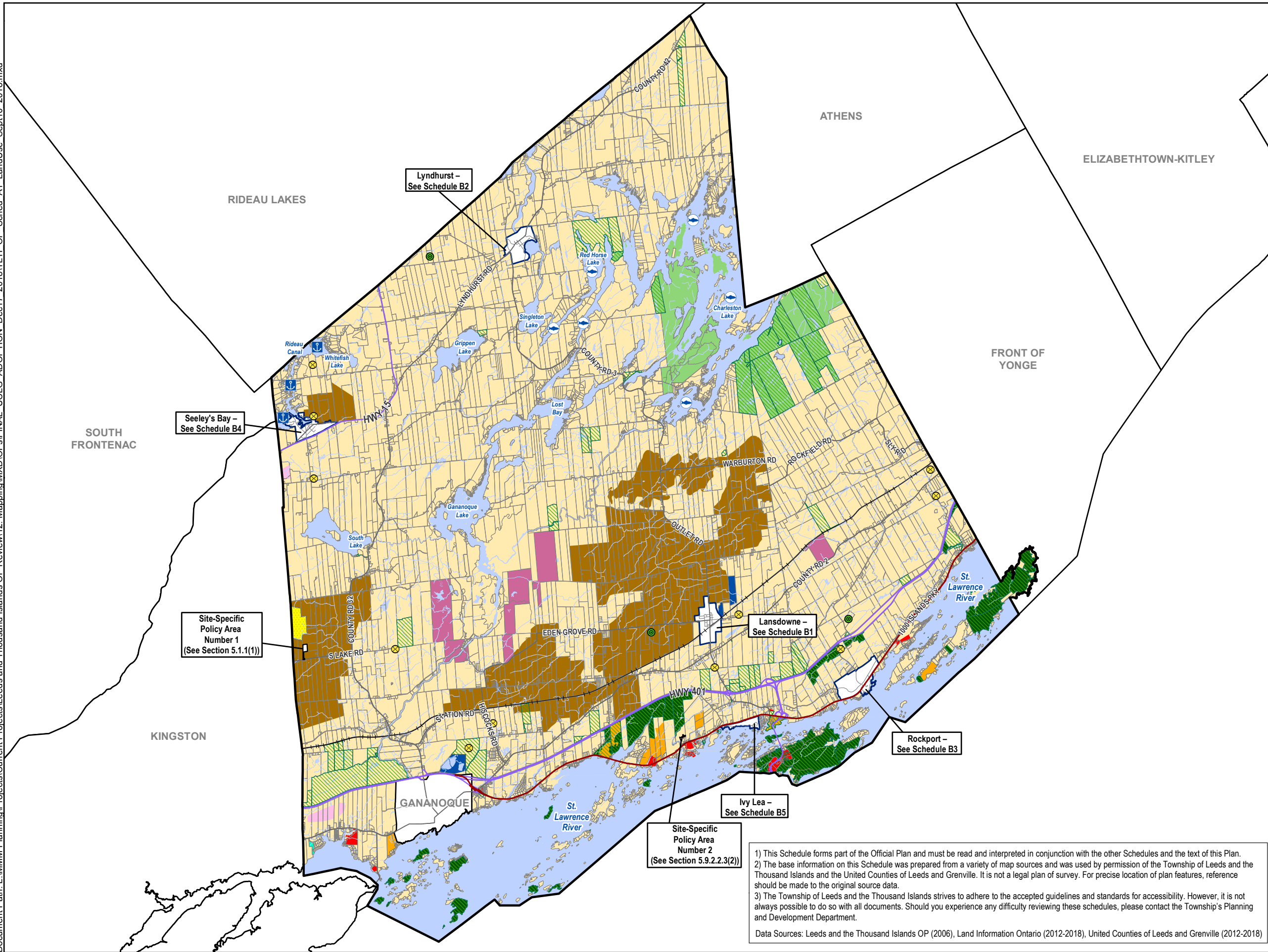
- Municipal Boundaries
- Leeds and the Thousand Islands Boundary
- Provincial Highway
- Thousand Islands Parkway
- County Roads
- Township Roads
- Active Railway
- Rideau Canal National Historic Site, Canadian Heritage River, and UNESCO World Heritage Site
- Settlement Area
- Agriculture
- Rural
- Provincial Park
- Cataraqui Region Conservation Authority Land
- Crown Lands
- Mineral Resources - Wollastonite
- Airport
- Environmental Protection (Applies to all land under waterbodies; see Section 5.2 of the Official Plan)
- Waste Management**
  - Active Waste Disposal Site
  - Former Waste Disposal Site
  - Sewage Disposal Site
- Special Policy Area**
  - Highly Sensitive Lake Trout Lakes
- Special Policy Area - Thousand Islands (South of Highway 401)**
  - Rural
  - Tourist Commercial
  - Active Recreation
  - Township Parkland
  - National Park



COORDINATE SYSTEM:  
NAD 1983 UTM Zone 18N



September 2018



Site-Specific Policy Area Number 2  
(See Section 5.9.2.2.3(2))

1) This Schedule forms part of the Official Plan and must be read and interpreted in conjunction with the other Schedules and the text of this Plan.  
2) The base information on this Schedule was prepared from a variety of map sources and was used by permission of the Township of Leeds and the Thousand Islands and the United Counties of Leeds and Grenville. It is not a legal plan of survey. For precise location of plan features, reference should be made to the original source data.  
3) The Township of Leeds and the Thousand Islands strives to adhere to the accepted guidelines and standards for accessibility. However, it is not always possible to do so with all documents. Should you experience any difficulty reviewing these schedules, please contact the Township's Planning and Development Department.

Data Sources: Leeds and the Thousand Islands OP (2006), Land Information Ontario (2012-2018), United Counties of Leeds and Grenville (2012-2018)