



OFFICIAL PLAN SCHEDULE A5 WILDLAND FIRE HAZARD AREAS

LEEDS AND THE THOUSAND ISLANDS
COUNCIL ADOPTION SEPTEMBER 10, 2018

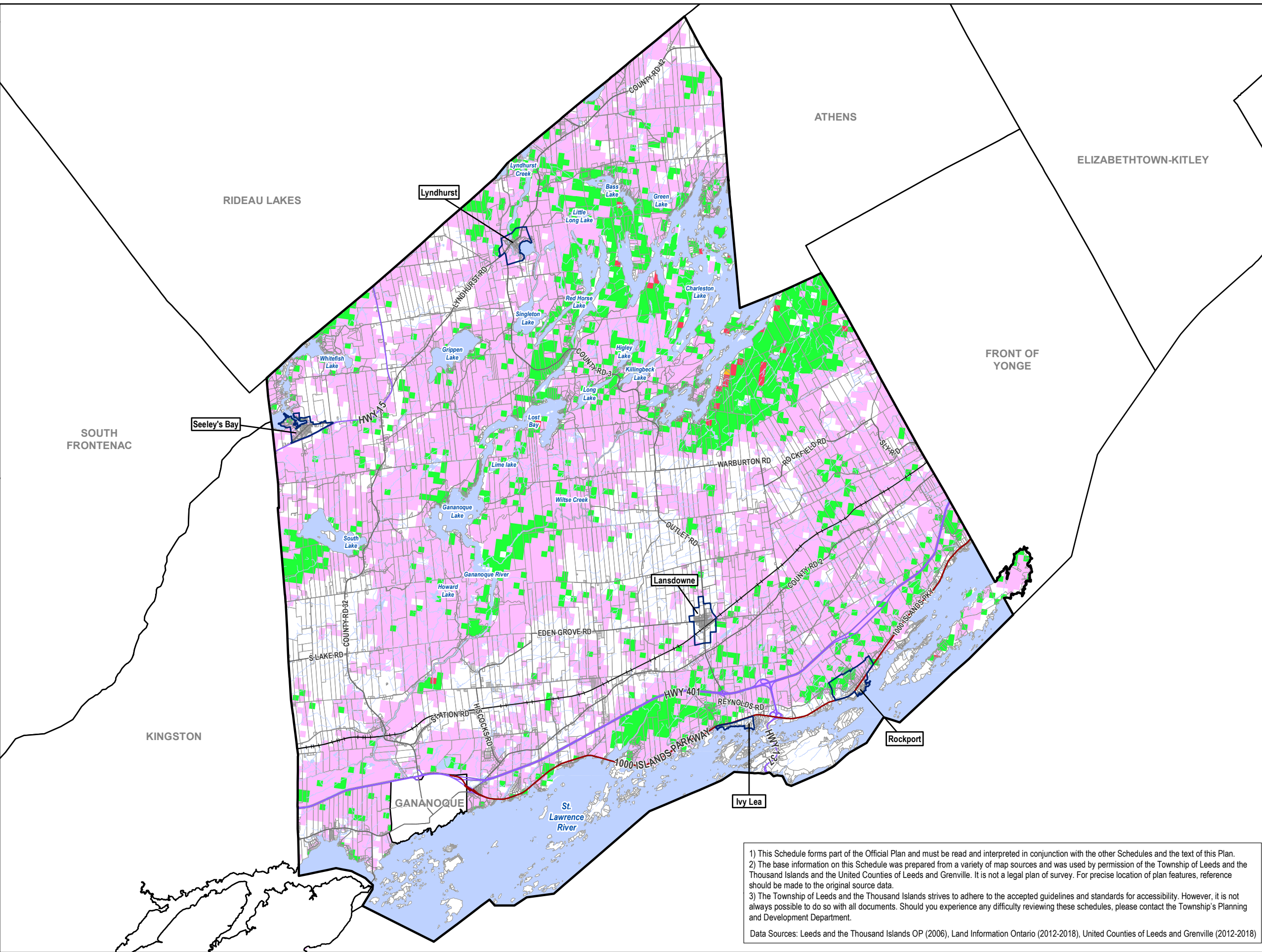
UNITED COUNTIES OF LEEDS AND GRENVILLE
APPROVAL NOVEMBER 22, 2018

Legend

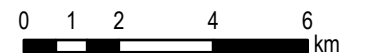
- Municipal Boundaries
- Leeds and the Thousand Islands Boundary
- Settlement Area Boundary
- Provincial Highway
- Thousand Islands Parkway
- County Roads
- Township Roads
- Active Railway
- Environmental Protection (Applies to all land under waterbodies; see Section 5.2 of the Official Plan)

Wildland Fire Hazard Areas

- Extreme
- High
- Moderate
- Low



1) This Schedule forms part of the Official Plan and must be read and interpreted in conjunction with the other Schedules and the text of this Plan.
 2) The base information on this Schedule was prepared from a variety of map sources and was used by permission of the Township of Leeds and the Thousand Islands and the United Counties of Leeds and Grenville. It is not a legal plan of survey. For precise location of plan features, reference should be made to the original source data.
 3) The Township of Leeds and the Thousand Islands strives to adhere to the accepted guidelines and standards for accessibility. However, it is not always possible to do so with all documents. Should you experience any difficulty reviewing these schedules, please contact the Township's Planning and Development Department.
 Data Sources: Leeds and the Thousand Islands OP (2006), Land Information Ontario (2012-2018), United Counties of Leeds and Grenville (2012-2018)



COORDINATE SYSTEM:
NAD 1983 UTM Zone 18N



September 2018