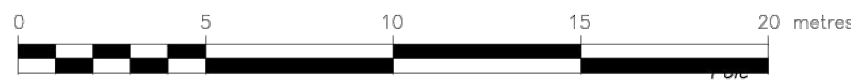


PLAN OF SURVEY OF
**PART OF LOTS 15 & 16
 CONCESSION 1**
 Geographic Township Of Lansdowne
 TOWNSHIP OF LEEDS AND THE THOUSAND ISLANDS
 COUNTY OF LEEDS

SCALE 1 : 200



JORDAN-BENNETT GEOMATICS INC.
 ONTARIO LAND SURVEYORS

The intended plot size of this plan is 914mm in width by 610mm in height when plotted at a scale of 1:200.

PLAN 28R-15499

Received and deposited

March 17th, 2022

Zach Patterson

Representative for the
 Land Registrar for the
 Land Titles Division of
 Leeds (No.28)

SCHEDULE

PART	PART OF LOT	CON.	PART OF PIN	NAME OF MOST RECENT TRANSFERREES	AREA(Sq.M.)
1	15 & 16	1	44299-0406(LT)	1178460 ONTARIO INC.	1.5
2	16	1	44299-0406(LT)	1178460 ONTARIO INC.	1.5
3	16	1	44299-0406(LT)	1178460 ONTARIO INC.	1.5
4	16	1	44299-0406(LT)	1178460 ONTARIO INC.	1.5
5	16	1	44299-0271(LT)	2156713 ONTARIO LIMITED	1.5
6	16	1	44299-0270(LT)	2156713 ONTARIO LIMITED	1.5

- PART 2 S/T LR301604

LEGEND

- IB DENOTES IRON BAR
- SSIB DENOTES SHORT STANDARD IRON BAR
- SIB DENOTES STANDARD IRON BAR
- CM DENOTES CONCRETE MONUMENT
- DENOTES SURVEY MONUMENT FOUND
- DENOTES SURVEY MONUMENT SET
- MEAS DENOTES MEASURED
- W/L DENOTES "WITNESS" MONUMENT
- QU DENOTES ORIGIN UNKNOWN
- S DENOTES SET
- ORP DENOTES OBSERVED REFERENCE POINT
- P1 DENOTES PLAN 28R-10160
- P2 DENOTES PLAN 28R-12189
- P3 DENOTES PLAN 28R-2016P-2026-57
- P4 DENOTES PLAN 28R-6848
- P5 DENOTES PLAN 28R-7209

SSIBs WERE SET DUE TO LACK OF OVERBURDEN AND/OR POSSIBLE BURIED UTILITIES IN AREA

NOTES

BEARINGS ARE UTM GRID, DERIVED FROM OBSERVED REFERENCE POINTS (ORP) & (ORP). MEASUREMENTS WERE MADE USING REAL TIME NETWORK OBSERVATIONS, UTM ZONE 18, NAD83(CSRS)(2010.0)

ALL DISTANCES AND COORDINATES ON THIS PLAN ARE IN METRES AND CAN BE CONVERTED TO FEET BY DIVIDING BY 0.3048.

DISTANCES ARE GROUND AND CAN BE CONVERTED TO GRID BY MULTIPLYING BY AN AVERAGE COMBINED SCALE FACTOR OF 0.9999674.

FOR BEARING COMPARISONS, A ROTATION FACTOR OF 0°44'00" CLOCKWISE WAS APPLIED TO BEARINGS ON P1, P2, P3, P4 & P5.

Reference Points UTM Zone 18 NAD83 (CSRS)(2010.0)
 Real-Time Network Observations
 Coordinates to Rural Accuracy per Sec. 14(2) of O.Reg. 216/10

Point I.D.	Northing	Easting
ORP ①	4912506.8	418823.5
ORP ②	4912406.0	418740.9

COORDINATES CANNOT, IN THEMSELVES, BE USED TO RE-ESTABLISH CORNERS OR BOUNDARIES SHOWN ON THIS PLAN.

SURVEYOR'S CERTIFICATE

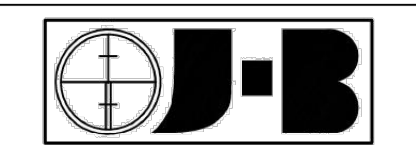
I CERTIFY THAT:
 1. THIS SURVEY AND PLAN ARE CORRECT AND IN ACCORDANCE WITH THE SURVEYS ACT, THE SURVEYORS ACT, THE LAND TITLES ACT AND THE REGULATIONS MADE UNDER THEM.
 2. THE SURVEY WAS COMPLETED ON OCTOBER 25, 2021.

OCTOBER 28, 2021 DATE R.G. BENNETT ONTARIO LAND SURVEYOR

THIS PLAN RELATES TO ADLS PLAN SUBMISSION FORM No. V-17088.

HYDRO ONE NETWORKS

Drawing # L99998 D2S 10162 8829 Job # L9-57



P.O. Box 485
 33 Perth Street
 Brockville, Ontario
 K6V-5J7
 Phone: 613-342-7525
 office@jbgomatics.com

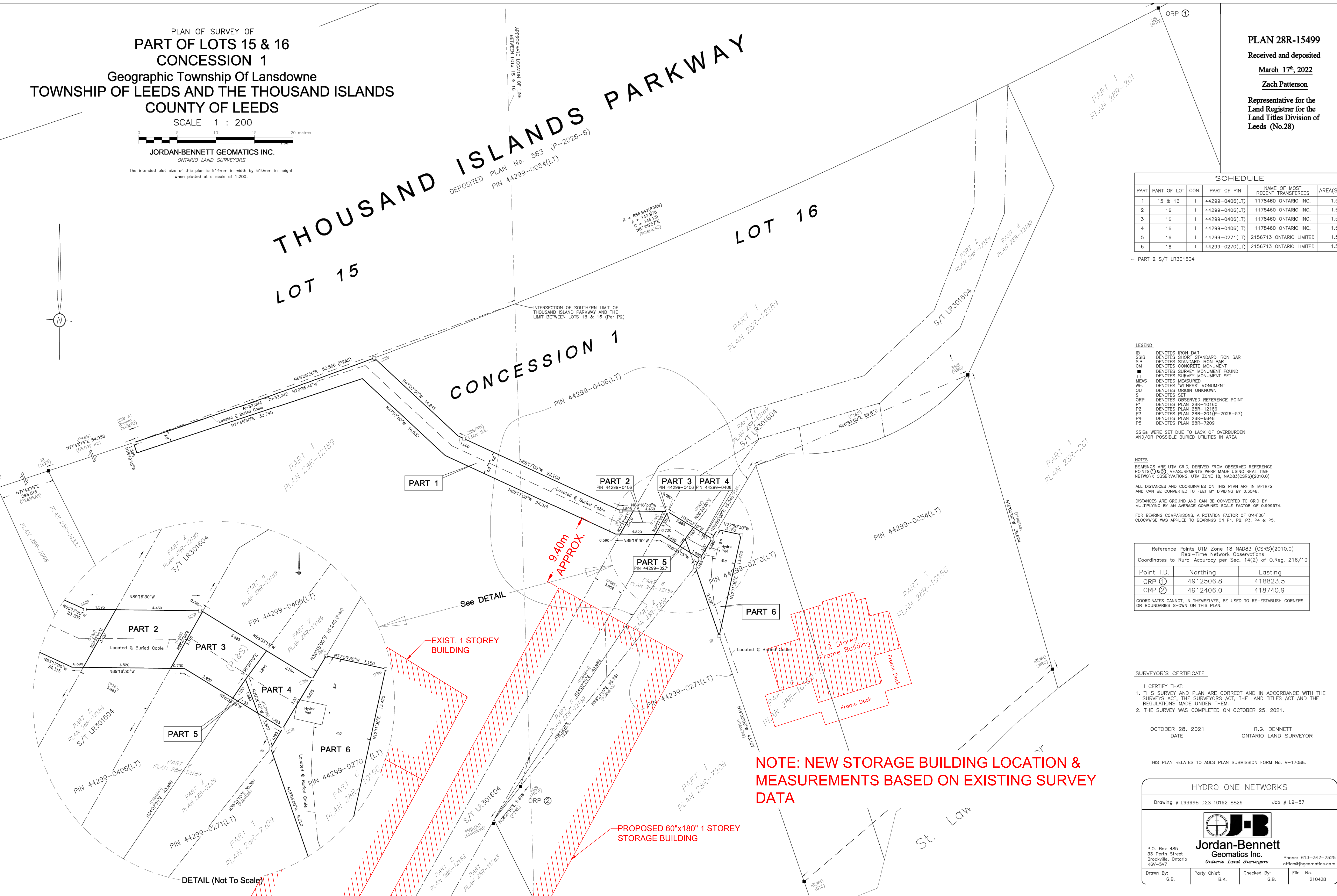
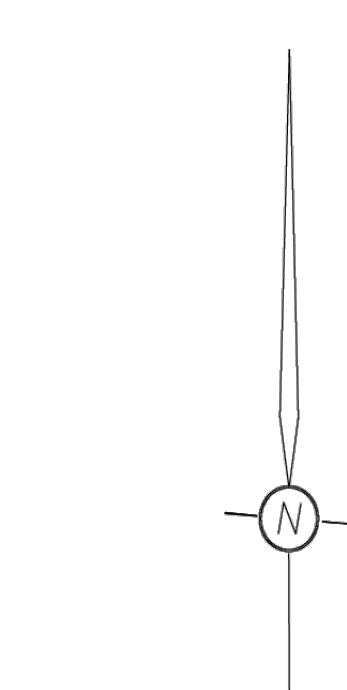
Drawn By: G.B. Party Chief: B.K. Checked By: G.B. File No. 210428

THOUSAND ISLANDS PARKWAY

LOT 15

LOT 16

CONCESSION 1



NOTE: NEW STORAGE BUILDING LOCATION & MEASUREMENTS BASED ON EXISTING SURVEY DATA

DETAIL (Not To Scale)